

SPECIFICATIONS FOR APPROVAL

ITEM :

DIGITAL 4.3" WIDE TFT-LCD MODULE

MODEL NO

RMD43WLCD.REV5.0

Notes :

Interlink Americas Inc.
One World Trade Center 8th Floor, Long Beach CA 90831
TEL: 562.366.4523, FAX: 562.366.8428

CONTENTS

- 1. FEATURES**
- 2. SPECIFICATIONS**
- 3. DIMENSIONS**
- 4. CONNECTION DIAGRAM**
- 5. PIN ASSIGNMENT**

1. FEATURES

1-1. ACTIVE MATRIX COLOR TFT LCD MODULE

1-2. COMPACT SIZE (DIAGONAL 4.3 INCH)

1-3. LOW POWER CONSUMPTION

1-4. HIGH QUALITY IMAGE

1-5. COMPOSITE VIDEO INPUT SIGNAL

APPLICATIONS

2-1. HANDHELD MOBILE DEVICE

2-2. CCTV MONITOR

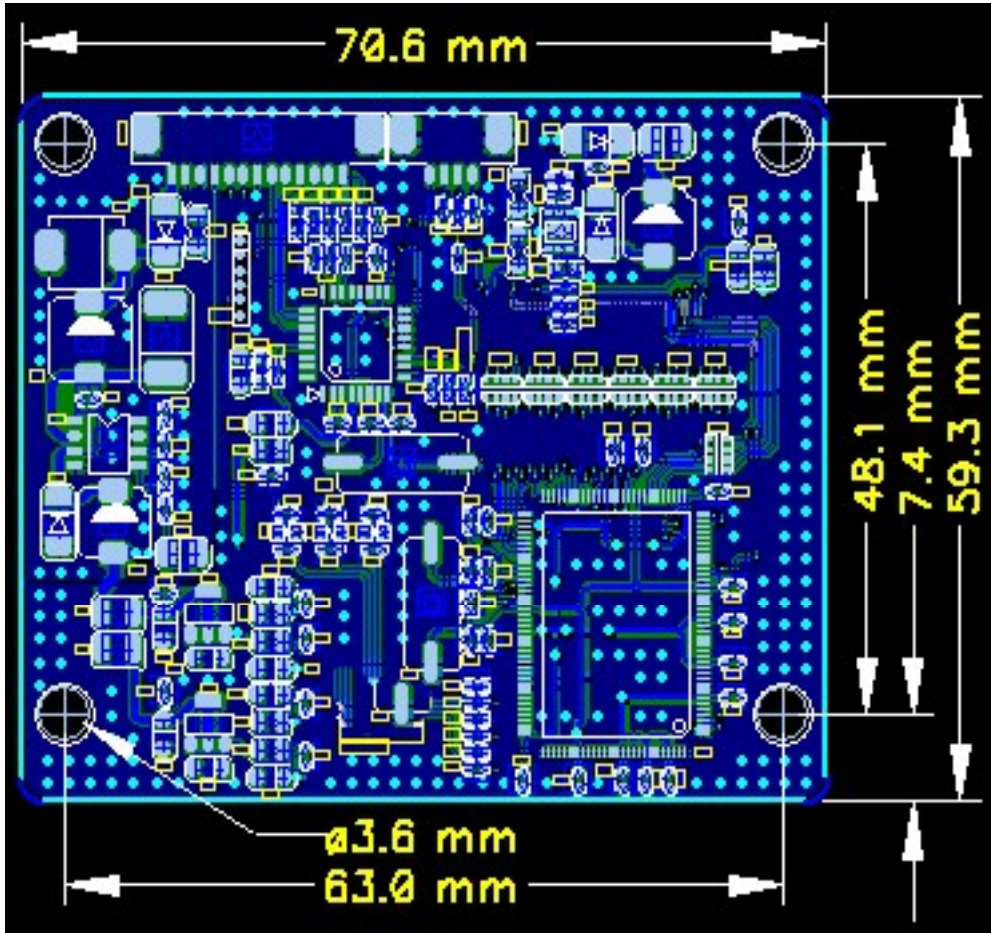
2-3. VIDEO DOOR PHONE MONITOR

2-4. SURVEILLANCE SYSTEMS

2.SPECIFICATIONS

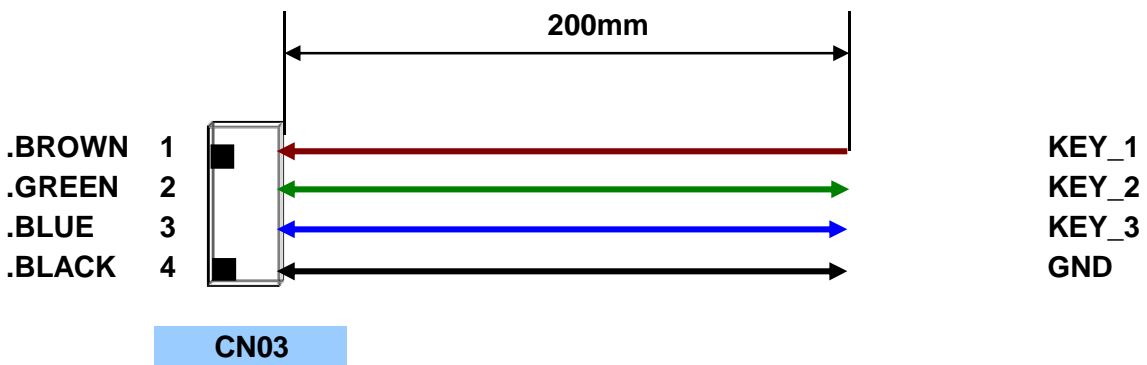
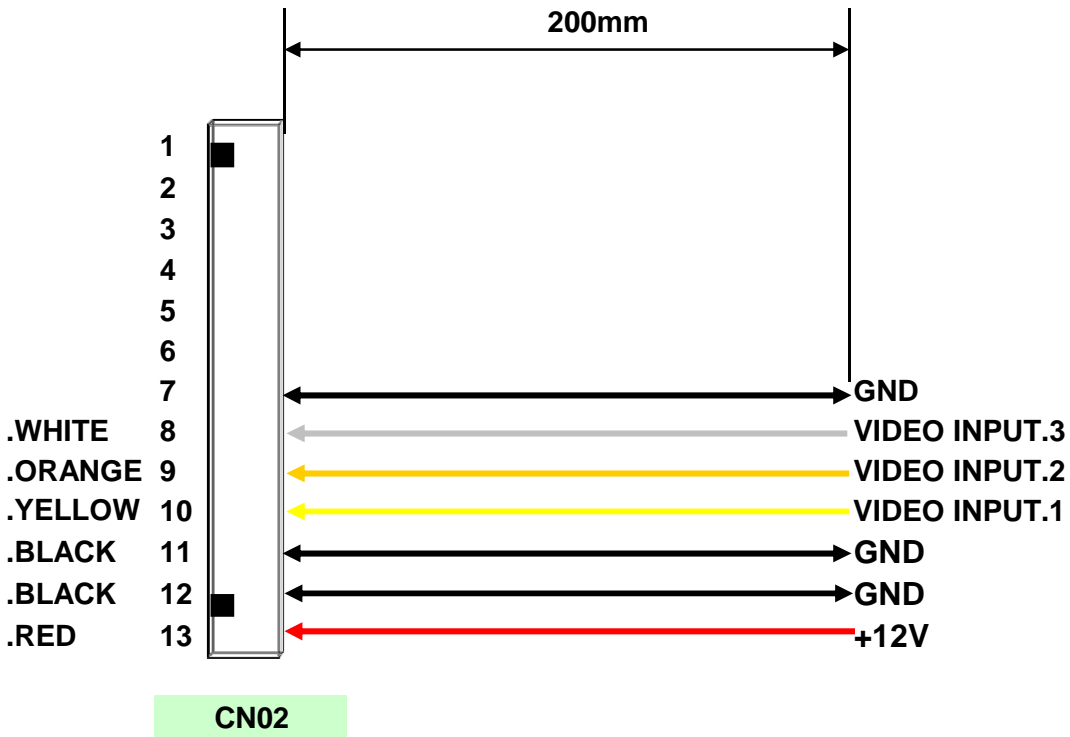
1	DISPLAY SIZE	DIAGONAL DIGITAL 4.3 INCH WIDESCREEN
2	DOT PITCH	0.198(H) X 0.198(H)
3	NUMBER OF DOTS	480(H) X RGBX272(V)
4	ACTIVE AREA	95.04(H) X 53.856(V)
5	COLOR FILTER ARRAY	RGB VERTICAL STRIPE
6	DISPLAY MODE	Normally black
7	INPUT SIGNAL	PAL / NTSC (AUTO)
8	SIGNAL INTERFACE	DIGITAL RGB
9	INPUT SIGNAL LEVEL	1.0Vp-p,75 Ohm
10	VIEWING ANGLE	TOP:80DEG BOTTOM:80DEG LEFT&LIGHT:80DEG
11	BRIGHTNESS	TYP, 500 (cd/m2)
12	OPERATING TEMPERATURE	-20~60°C
13	STORAGE TEMPERATURE	-40~85°C
14	INPUT VOLTAGE	DC12V(6.5V-32V). 220mA MAX
15	BACKLIGHT TYPE	LED
16	OUTLINE DIMENSION	105.5(H) X67.2(V) X2.9(D) mm

4.CONNECTION DIAGAM & DRIVER BOARD (mm)



DRIVER BOARD

4-1. CONNECTION DIAGRAM



5. PIN ASSIGNMENT

NO	PIN ASSIGNMENT	I/O	PIN DESCRIPTION	
1	CN02	Vin	I	12VDC Input - Optional 6.5V - 32V
2		GND	-	Ground
3		GND	-	Ground
4		CVBS.1	I	Composite Video_1 Signal Input
5		CVBS.2	I	Composite Video_2 Signal Input
6		CVBS.3	I	Composite Video_3 Signal Input
7		GND	-	Ground
8		CVBS.1	O	POWER1. Signal("H") Output (OPTION)
9		CVBS.2	O	POWER2. Signal("H") Output (OPTION)
10		CVBS.3	O	POWER3. Signal("H") Output (OPTION)
11		CVBS.1	I	Outside Signal Input (" H "→ " L ") (OPTION)
12		CVBS.2	I	Outside Signal Input (" H "→ " L ") (OPTION)
13		CVBS.3	I	Outside Signal Input (" H "→ " L ") (OPTION)

1	CN03	GND	-	GND	
2		UP	I	KEY_1 / UP	
3		MENU	I	KEY_2	1sec < OFF.CVBS1.CBVS2.CVBS3 1sec > Brightness.Color.Contrast
4		DOWN	I	KEY_3 / DOWN	

Usage of CN03

- * Press the menu key S/W one time to access the Brightness control bar.
- * Press the menu key S/W two times to access the Color control bar.
- * Press the menu key S/W three times to access the Contrast control bar.
- * Use "UP-DOWN" keys for adjustment.
- * Menu will close after 5 seconds.

