

SPECIFICATIONS FOR APPROVAL

ITEM :

DIGITAL 3.5" TFT-LCD MODULE

MODEL NO :

RMD35LCD.REV5.0

NOTES :

Interlink Americas Inc

One World Trade Center 8th Floor, Long Beach CA 90831

TEL: 562.366.4523, FAX: 562.366.8428

CONTENTS

- 1. FEATURES**
- 2. SPECIFICATIONS**
- 3. DIMENSIONS**
- 4. CONNECTION DIAGRAM**
- 5. OPTIONAL KEY & VR CONTROL**

1. FEATURES

1-1. ACTIVE MATRIX COLOR TFT LCD MODULE

1-2. COMPACT SIZE (DIAGONAL 3.5 INCH)

1-3. LOW POWER CONSUMPTION

1-4. HIGH QUALITY DIGITAL IMAGE

1-5. COMPOSITE VIDEO INPUT SIGNAL

APPLICATIONS

2-1. HANDHELD MOBILE DEVICE

2-2. CCTV MONITOR

2-3. VIDEO DOOR PHONE MONITOR

2-4. SURVEILLANCE SYSTEMS

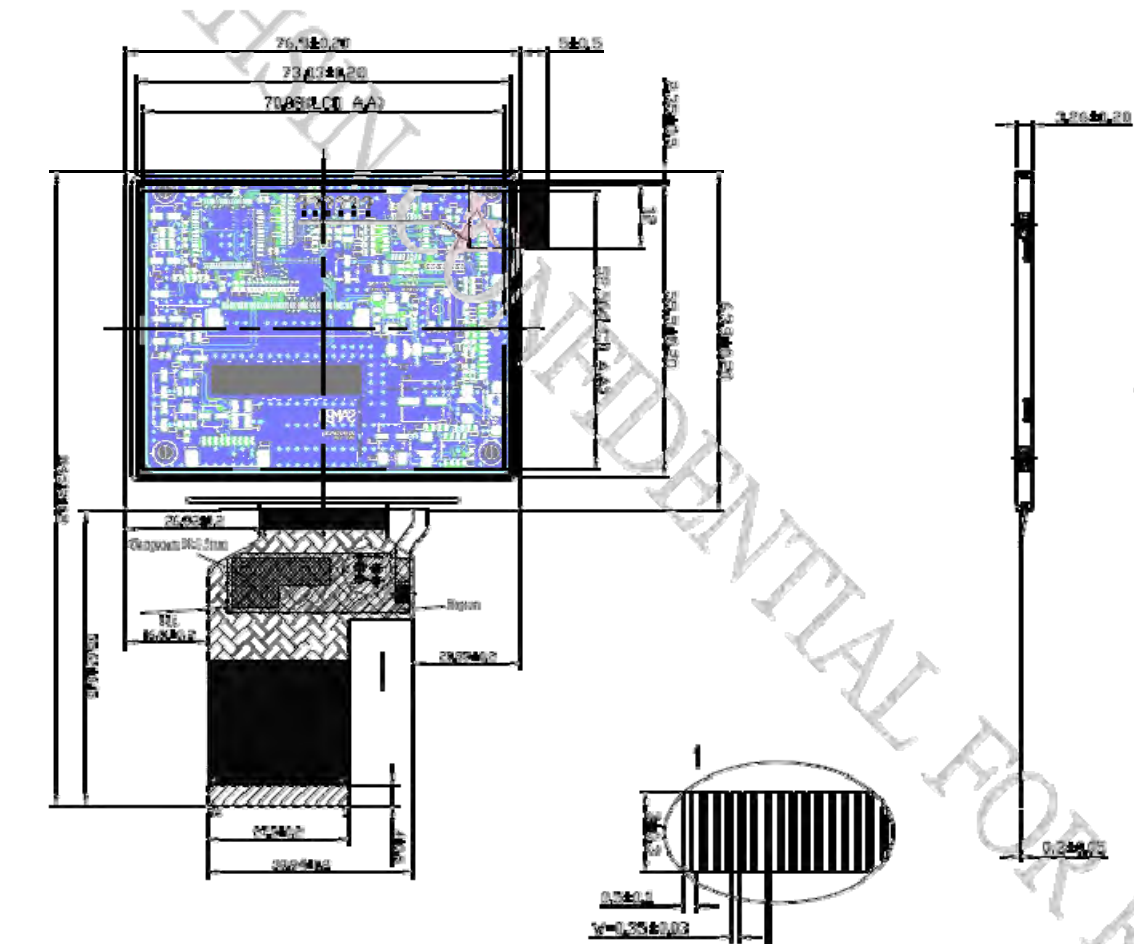
2.SPECIFICATIONS

1	DISPLAY SIZE	DIAGONAL DIGITAL 3.45 INCHES
2	DOT PITCH	0.073 X 0.219
3	NUMBER OF DOTS	320(H) X RGB X 240(V)
4	ACTIVE AREA	70.08(H) X 52.56(V)
5	COLOR FILTER ARRAY	RGB VERTICAL STRIPE
6	DISPLAY MODE	TN / TRANSMISSIVE / NORMALLY WHITE
7	INPUT SIGNAL	PAL / NTSC(AUTO)
8	SIGNAL INTERFACE	DIGITAL RGB + SPI INTERFACE
9	INPUT SIGNAL LEVEL	1.0Vp-p,75 Ohm
10	VIEWING ANGLE	TOP:50DEG BOTTOM:55DEG LEFT&LIGHT:60DEG
11	Luminance	TYP,250(cd)
12	OPERATING TEMPERATURE	-20~70'C
13	STORAGE TEMPERATURE	-30~80'C
14	INPUT VOLTAGE	DC12V(6.5V-28V). 120mA
15	BACKLIGHT TYPE	LED
16	OUTLINE DIMENSION	76.9(H) X63.9(V) X3.26(D)

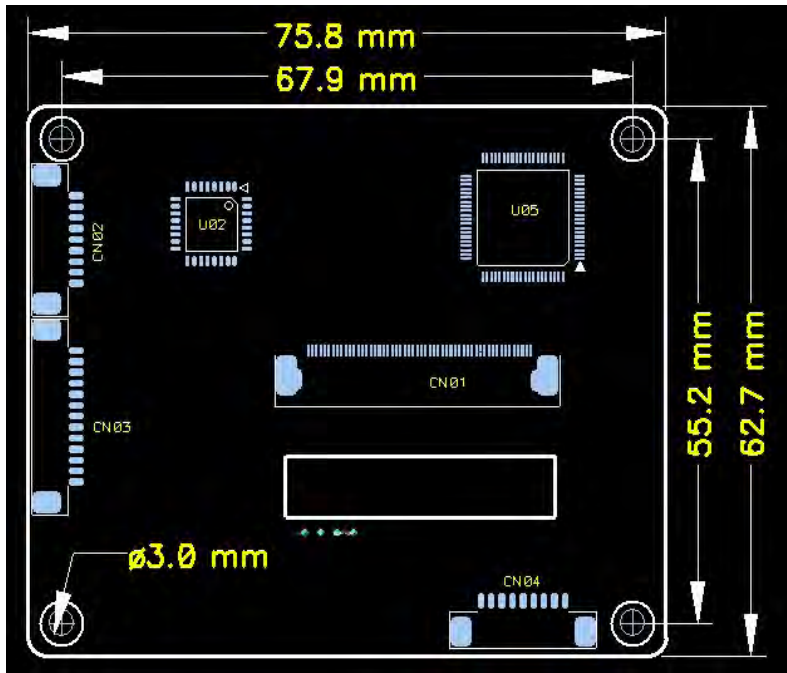
3.DIMENSIONS (mm)

.ACTIVE DISPLAY AREA

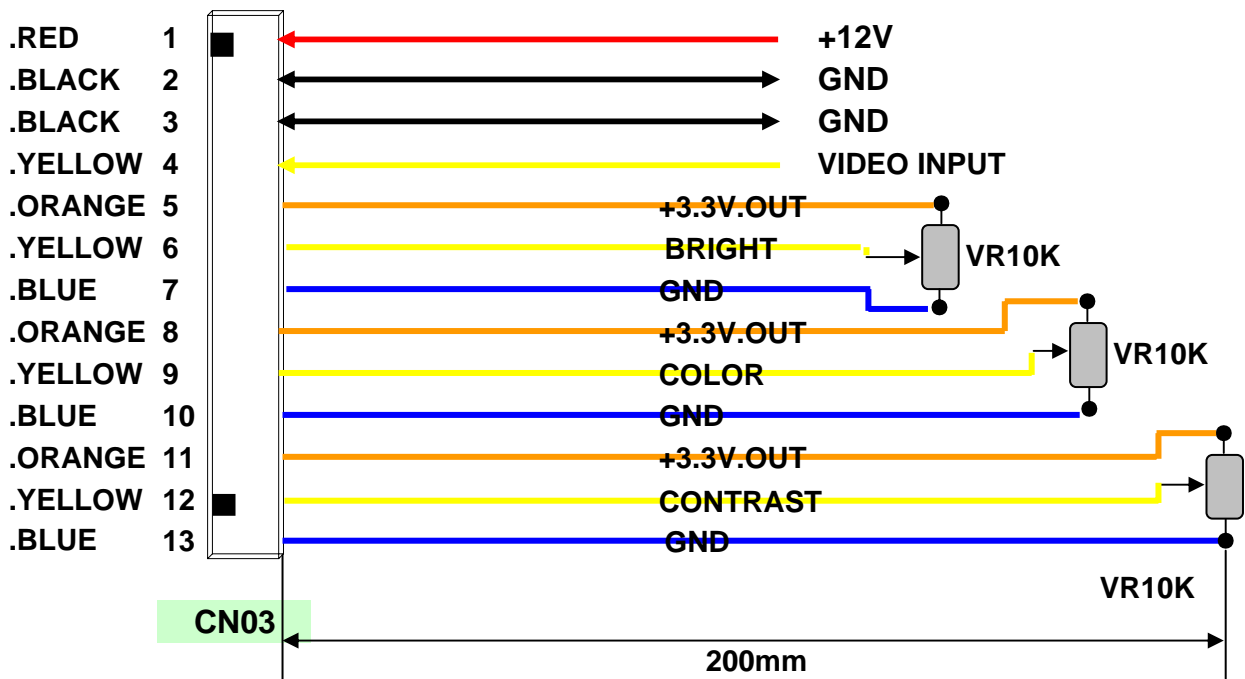
70.08 X 63.9

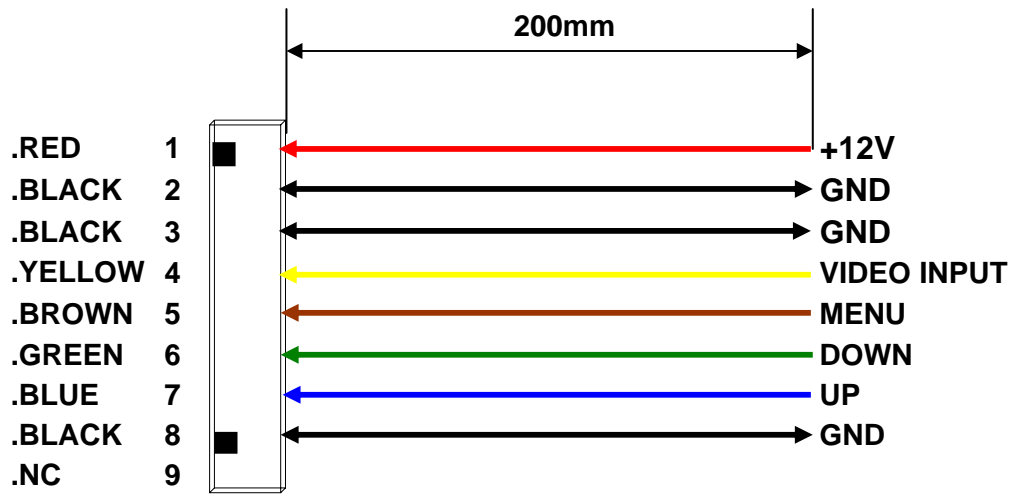


4.CONNECTION DIAGAM & DRIVER BOARD (mm)

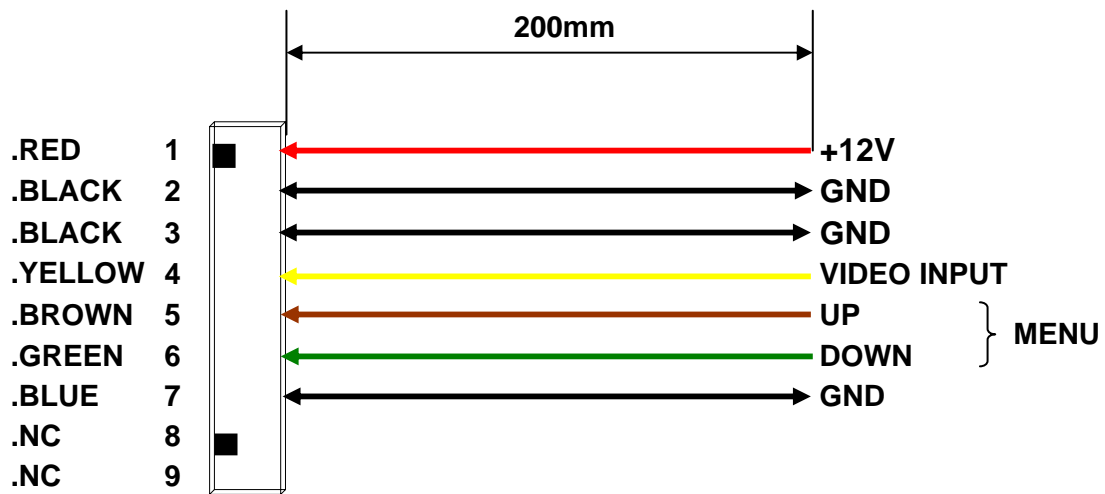


*EXTERNAL CONTROL INTERFACE





CN01



CN04

* PIN ASSIGNMENT

NO	PIN ASSIGNMENT	I/O	PIN DESCRIPTION	
1	CN01	Vin	12VDC Input	
2		GND	Ground	
3		GND	Ground	
4		CVS / Y	I	Composite Video Signal Input
5		MENU	I	KEY S/W (Brightness.Color.Contrast)
6		DOWN	I	KEY S/W (-)
7		UP	I	KEY S/W (+)
8		GND	-	Ground
9		NC		NC

Usage of CN03

- * Press the menu key S/W one time to access the Brightness control bar.
- * Press the menu key S/W two times to access the Color control bar.
- * Press the menu key S/W three times to access the Contrast control bar.
- * Use "UP-DOWN" keys for adjustment.
- * Menu will close after 5 seconds.



NO	PIN ASSIGNMENT	I/O	PIN DESCRIPTION	
1	CN04	Vin	I	12VDC Input
2		GND	-	Ground
3		GND	-	Ground
4		CVS / Y	I	Composite Video Signal Input
5		DOWN	I	KEY S/W (-)
6		UP	I	KEY S/W (+)
7		GND	I	Ground
8		NC		NC
9		NC		NC

Usage of CN04

1. Press any button for brightness adjustment.
2. Press two buttons at the same time for color and contrast adjustment.
3. Press "+" or "-" to increase/decrease the value
4. Menu will close after 5 seconds.



NO	PIN ASSIGNMENT	I/O	PIN DESCRIPTION	
1	CN03	Vin	12VDC Input	
2		GND	Ground	
3		GND	Ground	
4		CVS / Y	I	Composite Video Signal Input
5		VCC	O	+3.3V Output
6		BRT	I	Brightness
7		GND	-	Ground
8		VCC	O	+3.3V Output
9		CNT	I	Contrast
10		GND	-	Ground
11		VCC	O	+3.3V Output
12		COL	I	Color
13		GND	-	Ground

Usage of CN03

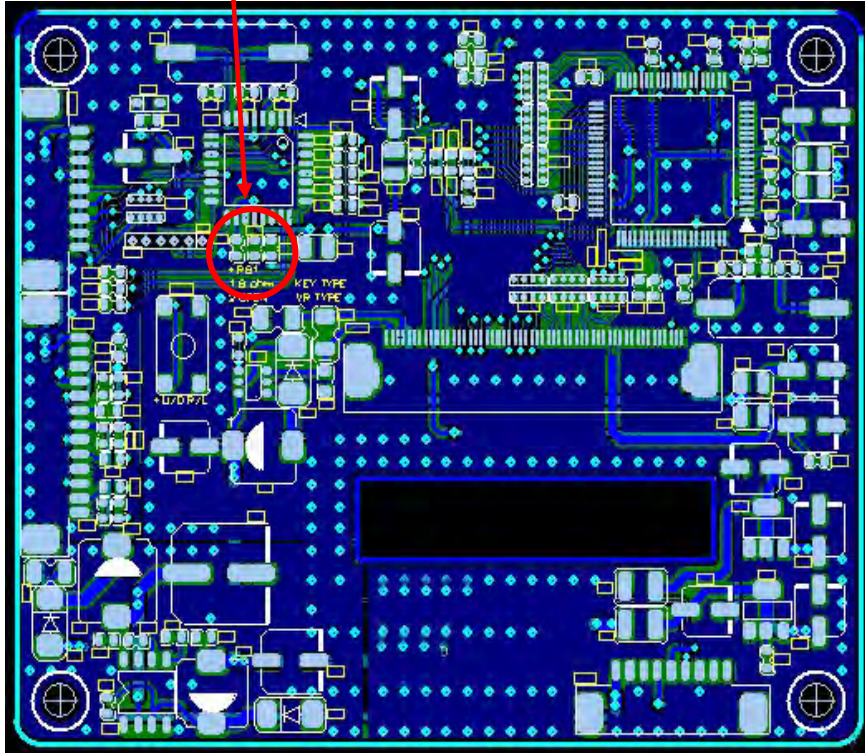
- * Adjusts Brightness, Contrast and Color with VR10K.
- * Control Bar will show similar to image below.



5.Option of KEY & VR (Ref. picture below)

5-1. For KEY (Insert R01 0ohm)

5-2. For VR (Open R01)



DRIVER BOARD

6.DATA SHEETS FOR MAIN COMPONENTS